

 **PROGRESSIVE
SANCTIONS.**

 **FLEXIBILITY.**

 **PERSONALIZATION.**

Offering government agencies a one-stop source for a broad range of electronic monitoring equipment and services.

BLUBAND™

- ▶ A radio frequency (RF) transceiver
- ▶ Detects tampers and entrances/exits into an offender's home
- ▶ Capable of receiving messages about the parameters and range of the RF tether
- ▶ Battery permanently sealed in case



BLUBAND™

BLUHOME™

- ▶ Interfaces with BluBand™ and BluTag® in active, hybrid and passive modes; creates RF tether between the device and itself
- ▶ Transmits home arrest/curfew information using cellular, digital or analog/landline telephone service
- ▶ Transmits GPS monitoring data using digital or cellular telephone service



BLUHOME™

BLUTAG®

- ▶ The original, patented one-piece GPS device — more offenders monitored by it than any other one-piece device
- ▶ One device, three data transmission schedules — active, hybrid, passive
- ▶ Longest battery life when receiving one GPS location point per minute — 40+ hours
- ▶ Battery permanently sealed in case
- ▶ RF functionality built into electronics



BLUTAG®

BLUFONE™



BLUFONE™

- ▶ Interfaces with BluTag® and allows voice communication and text messaging
- ▶ Receives calls only from pre-programmed telephone numbers
- ▶ Offenders can not make outbound calls

BLUBOX™



BLUBOX™

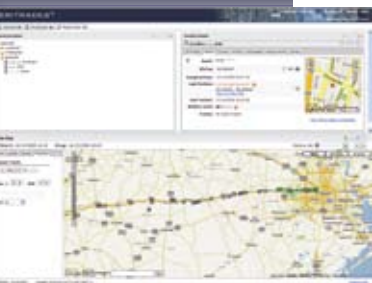
- ▶ A GPS accessory that confirms the presence of one or more offenders in a designated location
- ▶ Interfaces with BluTag® in active and hybrid GPS monitoring modes
- ▶ Usable in both private homes/apartments and group residential facilities

BLUSCAN™



BLUSCAN™

- ▶ Monitors up to 16 individual pieces of RF and/or GPS monitoring equipment within 300 feet radius
- ▶ Date and time stamps and stores up to 5,000 events
- ▶ Can operate for at least three days on battery power



VERITRACKS™

VERITRACKS®

- ▶ Receives, distributes and stores all data generated by BluBand™ and BluTag®
- ▶ Does not require installation of any software onto an agency's IT network or individual work stations
- ▶ Supervising agents can personalize the VeriTracks® home page to display the data they consider the most important
- ▶ Robust mapping functionality accesses Google™ Maps

